



# MY SCIENCE JOURNEY

THE JOURNEY  
CONTINUES IN  
KEY STAGE 2

ANIMALS, INCLUDING  
ANIMALS

LIVING THINGS AND THEIR  
HABITATS



EVERYDAY  
MATERIALS

PLANTS



YEAR 2

EVERYDAY  
MATERIALS



ANIMALS  
INCLUDING  
ANIMALS

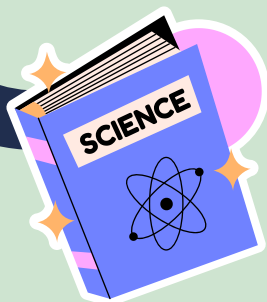


PLANTS



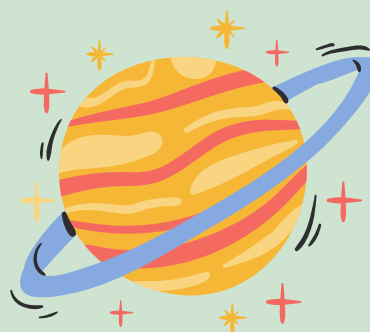
SEASONAL CHANGES

YEAR 1



The World and Exploring Science: In EYFS, children begin to develop their scientific understanding by exploring the natural world around them. They observe and talk about plants, animals, and seasonal changes, noticing similarities and differences. Through hands-on experiences, they explore materials, investigate how things work, and begin to ask questions about what they see. These early explorations lay the foundations for scientific enquiry by encouraging curiosity, observation, and simple experimentation

EYFS



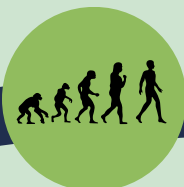


# MY SCIENCE JOURNEY

THE JOURNEY  
CONTINUES AT  
SECONDARY  
SCHOOL

YEAR 6

EVOLUTION AND  
INHERITANCE



ELECTRICITY



LIGHT



ANIMALS,  
INCLUDING  
HUMANS



LIVING THINGS  
AND THEIR  
HABITATS

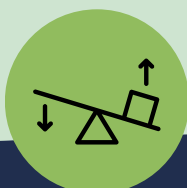


YEAR 5

LIVING THINGS  
AND THEIR  
HABITATS



FORCES



EARTH AND SPACE



ANIMALS,  
INCLUDING  
HUMANS



PROPERTIES OF  
MATERIALS

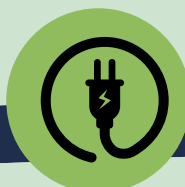


YEAR 4

SOUND



ELECTRICITY



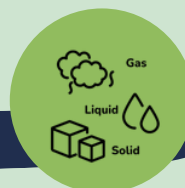
TEETH AND  
ANIMALS, INCLUDING  
HUMANS



LIVING THINGS  
AND THEIR  
HABITATS



STATES OF  
MATTER



YEAR 3

LIGHT



FORCES AND  
MAGNETS



PLANTS



ROCKS AND SOILS



ANIMALS, INCLUDING  
HUMANS

